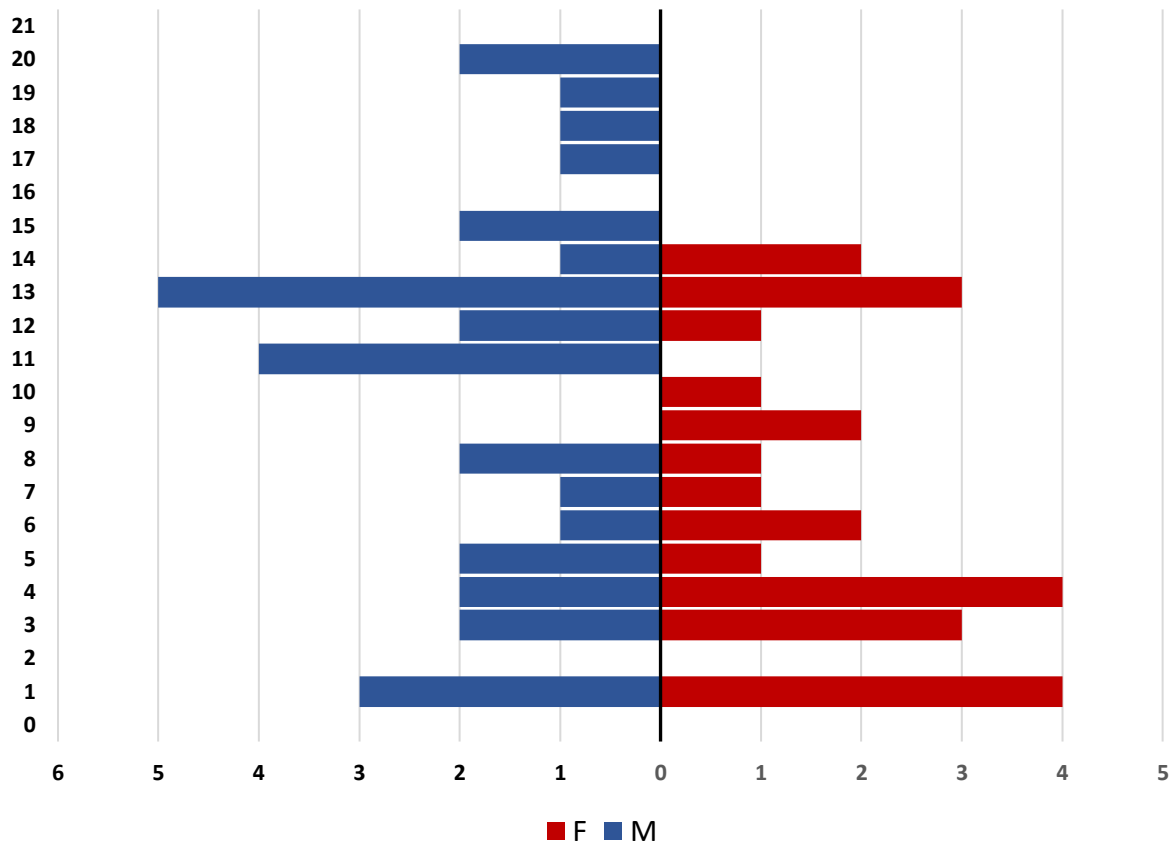


Mehmood A., Budd J., Alenzy A. M. & Ferreira J. D. 2024. Beyond the wild: the role of ex situ conservation in ensuring the survival of the Arabian leopard. *Cat News* 79, 36–37. Supporting Online Material.

Age and sex distribution



SOM Figure F1. Age pyramid: There are more males than females (33 versus 26) in the breeding programme (Budd 2022).